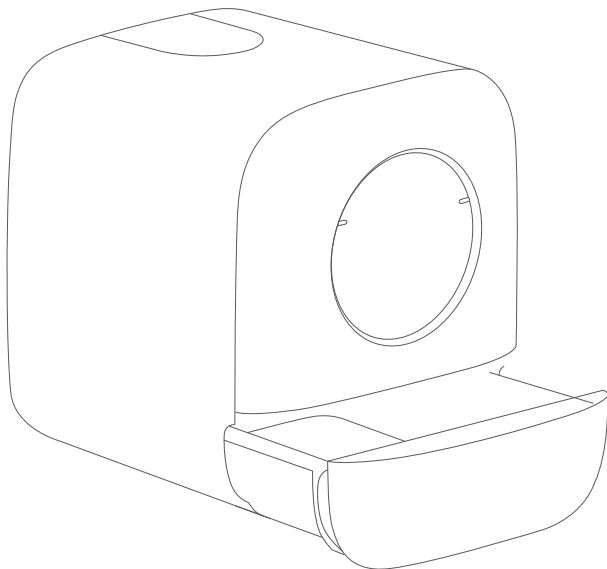


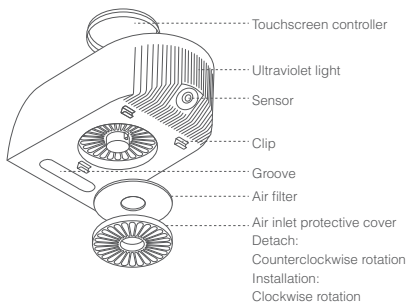
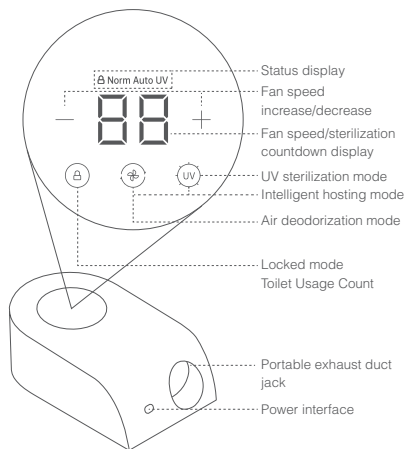
Intelligent Fresh Air Deodorization Litter Box

Effective deodorization can be achieved through proper ventilation and odor removal

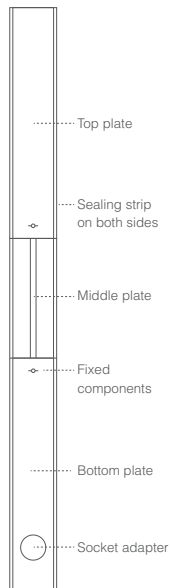


HoHoHi

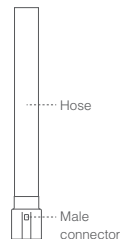
Introduction



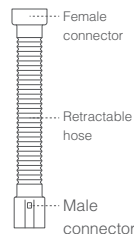
Air Deodorization System



Sliding window extension plate



Hose




Portable exhaust duct

Quick Operation Manual


1. After power-on, it will enter the intelligent hosting mode by default

Intelligent hosting mode (quick deodorization after pet entry and exit, quieter at night), Recommended for most cats. Under the intelligent hosting mode, the normal 20-speed air purification is performed. When a pet is detected, it automatically adjusts to 80-speed air purification for 10 minutes. After 10 minutes, it automatically returns to 20-speed air purification. The UV sterilization runs for 30 minutes automatically every day, and it will immediately stop sterilizing when a pet is detected.

-  Simultaneously press and hold the "Wind" button and the "UV" button to turn on/off the intelligent hosting mode: After starting, the "Norm", "Auto", and "UV" lights are always on.



2. Switching between Manual and Automatic Deodorization Modes

-  Click the "wind" button: switch between constant on/automatic/off deodorization mode, and the screen displays the wind speed level.

Norm "Norm" light is always on: constant-on mode with continuous deodorizing function. Recommended for normal cats.

Auto "Auto" light is always on: intelligent control mode. It pauses deodorizing when a pet is detected and resumes after 60 seconds. Recommended for timid cats.



3. Adjusting the Air Purification Speed Level



It supports adjusting the air speed level from 01 to 99, and a recommended level of 20.

- + Click/long press "+": increase the level by 1/quickly increase the level.
- Click/long press "-": decrease the level by 1/quickly decrease the level.



4. Intelligent UV Sterilization



Click the "UV" button: switch between manual, automatic sterilization once a day, and off sterilization.

-  "UV" light is always on: manual sterilization mode. It automatically starts sterilizing after 7 seconds.
-  "UV" light is blinking: automatic sterilization once a day. It automatically sterilizes for 30 minutes every 24 hours.

It has a 7-seconds delay start and will automatically stop sterilizing when a pet is detected. During sterilization, the screen displays the countdown timer (in minutes).



5. Lock Button/Toilet Usage Counter Button

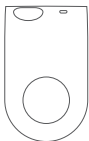
-  Quickly click the "Lock" button 3 times or more in succession: lock/unlock all touch keys. When locked, a lock icon will appear on the screen.
-  Click "Lock" button once: the screen displays the number of times the cat has entered the litter box in the last 24 hours and flashes. Calculation method: When a cat enters and leaves the sensing area for more than 3 minutes, it counts as 1 use. Note: The screen will automatically turn off if there is no button operation for 10 minutes.



What's in the package

(Different versions, actual packing accessories are different)

Air deodorization system and universal mounting accessories



Air deodorization system



Power adapter



Portable exhaust duct

Sliding window/door mounting accessories



Telescopic baffle



Adapter



Sliding window lock

Air conditioning hole/floor drain mounting accessories



Sealant (Air conditioning hole / floor drain universal)



Hose



Cover

Left and Right Sliding Window Installation

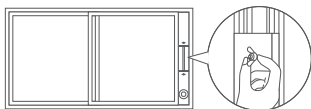
1. Install the telescopic baffle



A. Loosen the screw, expand the baffle, and insert the adapter.

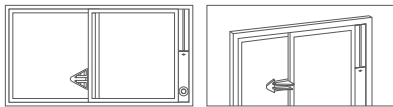


B. Install the third baffle.



C. Insert the baffle into the same slot as the window, align it top and bottom, and fix it in place.

2. Install the window lock



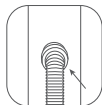
A. Clean the window and stick the lock.

B. Fold the lock wings together to lock the window.

3. Install the exhaust duct

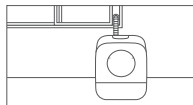


A. Keep the exhaust duct connector buckle on both sides horizontally and insert it into the machine socket.



B. Align the two slots in the female connector of the exhaust duct with the two buckles on the telescopic baffle adapter and insert them.

4. Connect the power cord to complete the installation



Air-Conditioning Hole Gap Installation

1. Installation of Air-Conditioning Hole Hose



A. Remove the air-conditioning hole decorative cover and sealant.



B. Insert the hose into the air-conditioning hole gap.

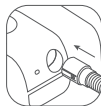


C. Seal the gap with sealant.



D. Install a new decorative cover.

2. Installation of Exhaust Pipe

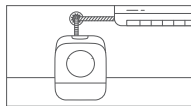


A. Keep the exhaust pipe male joint clamp on the horizontal sides and insert it into the main machine socket.



B. Align the two slots inside the female joint of the exhaust pipe with the two clamps on the hose joint, and insert them together.

3. Connect the power cord to complete the installation



Floor drain installation

1.Install the exhaust pipe

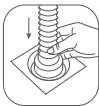


A. Keep the exhaust pipe male connector in a horizontal position and insert it into the main unit socket.

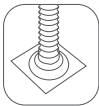
2.Connect to the floor drain



A. Remove the floor drain cover and also remove the deodorant core if there is one. Clean the surface.If there are other floor drains indoors, they should have odor-proof cores. If there are other sewer pipes, they should have water traps.It can prevent the situation where there are other floor drains or sewer pipes in the same room without odor-proof measures, which may result in odor leakage.

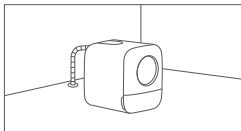


B. Press the female connector of the exhaust pipe tightly against the floor drain.



C. Seal the joint and the floor drain with sealant. Wait for 72 hours for the sealant to cure.

3.Connect the power cord to complete the installation



Disclaimer

Please read this manual carefully before use. Once you use this product, it is inferred that you have read this manual and understood all safety precautions. The company will not bear any responsibility associated with accidents and losses caused by negligent use of product. Illustrations of the product, accessories and user interface in this manual are for reference only. The actual product may differ from the illustrations due to product enhancements. The company reserves the right to interpret and amend the content of this manual.

Caution

- 1.Children and people who cannot care for themselves shall not use this product.
- 2.Avoid using excessive force. Cut off the power supply and stop use immediately once the light is broken.
- 3.Children and pets shall not stay or play within the sterilization range when the product is in the sterilization mode.
- 4.The smart life protection system provides safety support. Please ensure that people, pets, plants and other living things are removed from the site during sterilization to avoid injury.
- 5.Ultraviolet light can degrade organic matter and cause discoloration on the surface of the object after prolonged exposure. Please keep all valuables in a safe place.
- 6.This product can only be used with the provided power adapter. Any product damage caused by the use of a third-party power adapter will not be covered by warranty.
- 7.That smart air deodorization system and power adapter are not waterproof. Please DO NOT place the product in an environment with high temperatures and high humidity, and DO NOT wipe the product with a wet cloth or wash it.

Product parameters

Name: Intelligent Fresh Air Deodorization Litter Box
Input parameter: 12VDC 0.5A
Net weight: 5.5kg
Product size: 505X505X435mm

Method for Transitioning a Cat to a New Litter Box

For normal trained cats

Take out the new litter box drawer and place it outside. Pour in the used cat litter. After the cat adapts for two days, push the new litter box drawer back in, remove the plastic door in the middle of the litter box. After the cat adapts for two days, the plastic door can be put back and the litter box can be used normally.



Installation Video

E-mail: hohohi@hohohi.co.jp

Website : hohohi.co.jp

For some special situations that cats don't know how to use

Keep the old litter box before the cat starts using the new one. If necessary, place a small cardboard box at the entrance of the new box to create a step for kittens.

Pull out the drawer of the new litter box and add the used litter from the old box, exposing feces for the cat to bury. Let the cat use the new litter box drawer separately for 2-3 days. After the cat has used the drawer normally, remove the door of the new litter box by bending it inwards towards the middle. Remove the air purifier from the back of the litter box by pushing your finger up and backwards from the handle until the latch slot is visible. Place the drawer in the litter box and expose the feces.

Once the cat is using the new litter box normally, remove the old litter box when the owner is at home and observe the cat to avoid confusion or accidents.

After the cat is comfortable using the new box, reattach the door by bending it inwards towards the middle. Leave the door slightly ajar at first and gradually open it more while using a cat toy to lure the cat in and out of the box.

Install the air purifier and enable the new air purification and disinfection functions. The transition to the new litter box should now be complete, and the cat can start a healthy new life.